



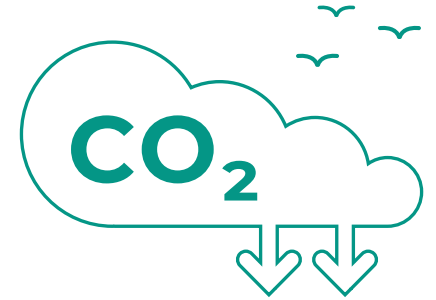
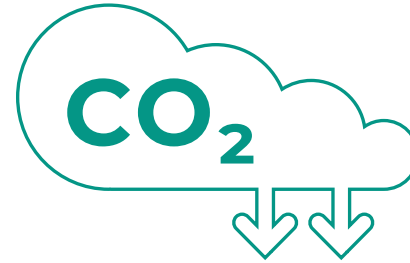
CLEVELAND CABLE COMPANY

# Environmental Sustainability Report 2023



# Contents

03	About Us
04	'Sustainability is a journey, not a destination'
05-06	Sustainable Development Goals
07	Greenhouse Gas Emissions & our Carbon Footprint
08	Scope for GHG Reporting
09-10	Our Reporting Assurance – SECR ESOS ISO
11	Scope 1 & 2 Reports
12	Carbon Performance & Intensity Ratio Performance
13	Scope 3
14	Waste
15	Sustainable Employment
16-17	Our Supply Chain
18	Our Policies & Governance, Working with the Customer
19	Next Steps & Summary



## Cleveland Cable Company Statement

**We are all on a journey together, where as a business we are aware of our impact on the planet including our local communities. We face differing and difficult challenges everyday within our operation, from raw materials to the delivery of the customer's orders.**

We understand as a company the importance of providing a sustainable business without compromising our values or our commitment to the environment. Working with our supply chain and customers to see how we can work together to ensure that today's impacts on the planet don't affect our children's future.

We are constantly looking at the next project to reduce our carbon emissions, such a solar installation.

# A GREENER CONNECTION

# About Us

**We are a global cable and cable accessory supplier with over 46 years' experience in delivering complete cable solutions. Founded in 1978, Cleveland Cable Company supplies some of the world's most demanding industries, with a portfolio of customers across the world.**

As the cable industry has developed, so have we, introducing new cable ranges and technology to meet growing demand from our customers and to ensure we can work with new markets. We have created a network of trusted suppliers with whom we work with to ensure we are gaining the best possible lead times, deliveries, and economies of scale, all of which we pass onto our customers.

With eight locations throughout the UK and Ireland, we are able to offer a network of suitable locations for collection or delivery requirements. We have branches based in Glasgow, Newcastle, Warrington, Northampton, London, Bristol, Dublin and our head office in Middlesbrough.

We also have a branch in Dubai which allows us to service the UAE market and export our cable and cable accessories around the world.



## Our branch locations

# Sustainability is a journey, not a destination

Sustainability can have different meaning to everyone, but the below definition is taken from Oxford dictionary and describes it simply – **‘The use of natural products and energy in a way that does not harm the environment.’**

Sustainability can be distinguished into three different areas which people refer to as the ‘3 Pillars’. These are Environment, Economy, and Society.

The term "corporate sustainability" refers to an approach to conducting business that creates sustainable, long-term shareholder, employee, consumer, and societal value by pursuing responsible environmental, social, and economic (or governance) strategies.



## Social Pillar

We as a company look at our support to our employees, stakeholders and the local community by providing a good, safe, enjoyable working environment for our staff and we also support local charities.



## Environmental Pillar

We as a company are focused on reducing our carbon footprint, packaging waste, water usage and other activities which damage the environment. By helping the planet these practices can also have a positive financial impact.



## Economic Pillar

We as a business are constantly looking for the next idea or project to ensure our company's future and provide a good service to our customers with the support of our supply chain.

# Sustainable Development Goals

As we are continuing our journey as a business we are working with our customers and supply chain to ensure we provide a sustainable operating environment. We remain committed to providing a safe and uplifting working environment, where fair treatment and pay is provided.

Our annual Ecovadis assessment, where in 2023 we achieved Silver Medal status, is our benchmark for considering all aspects of a sustainable operating environment.



No Poverty



Zero Hunger



Good Health  
& Well Being



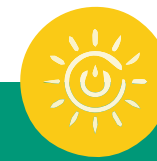
Quality  
Education



Gender  
Equality



Clean Water  
& Sanitation



Affordable &  
Clean Energy



Decent Work  
& Economic  
Growth



Industry  
Innovation &  
Infrastructure







Reduced  
Inequalities



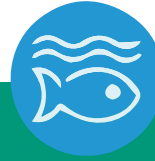
Sustainable  
Cities &  
Communities



Responsible  
Consumption  
& Production



Climate  
Action



Life Below  
Water



Life On  
Land



Peace,  
Justice &  
Strong  
Institutions



Partnerships  
for the  
Goals

# Greenhouse Gas Emissions & our Carbon Footprint

Greenhouse gases (also known as GHGs) are gases in the Earth's atmosphere that trap heat.

We are all aware of the impact of greenhouse gases on our environment, and in line with the Paris Accords, we are working to toward NetZero by 2050 with our aim to achieve this sooner.

Cleveland Cable Company are committed to reducing our carbon footprint wherever it is possible. Whilst this isn't yet a fully circular industry, we are working hard to get to that point ourselves. As such we are signed up to the Streamlined Energy and Carbon Reporting requirements scheme and produce an annual SECR report which is available on request.

The SECR considers our industry specific KPIs and company objectives which form part of our annual Integrated management system review. All company objectives are fully compliant to ISO 14001 SMART targets for continual improvement and are audited annually by UKAS to ensure that objectives are being achieved.



# Scope for GHG Reporting

Since 2020, we have been working with EIC on SECR accounting for our Scope 1 and Scope 2 Greenhouse Gas (GHG) emissions.

There is no requirement within SECR to complete Scope 3 but we are working with our supply chain to gain this information.

Greenhouse gases are those which have a global warming potential (GWP). This was developed to allow comparisons of the global warming impacts of different gases. Specifically, it is a measure of how much energy the emissions of 1 ton of a gas will absorb over a given period, relative to the emissions of 1 ton of carbon dioxide (CO<sub>2</sub>). Our emissions are reported in tCO<sub>2</sub>e (tonnes of Carbon Dioxide Equivalent).

Scope 1 and 2 for 2023 is 4405 tCO<sub>2</sub>e.  
Scope 3 total for 2023 is 4301 tCO<sub>2</sub>e.



## SCOPE 1

**Scope 1** covers emissions from sources that an organisation owns or controls directly – for example from burning fuel in our fleet of vehicles (if they're not electrically-powered).



## SCOPE 2

**Scope 2** are emissions that a company causes indirectly and come from where the energy it purchases and uses is produced. For example, the emissions caused when generating the electricity that we use in our buildings would fall into this category.



## SCOPE 3

**Scope 3** encompasses emissions that are not produced by the company itself and are not the result of activities from assets owned or controlled by them, but by those that it's indirectly responsible for up and down its value chain. An example of this is when we buy, use, and dispose of products from suppliers. Scope 3 emissions include all sources not within the scope 1 and 2 boundaries.



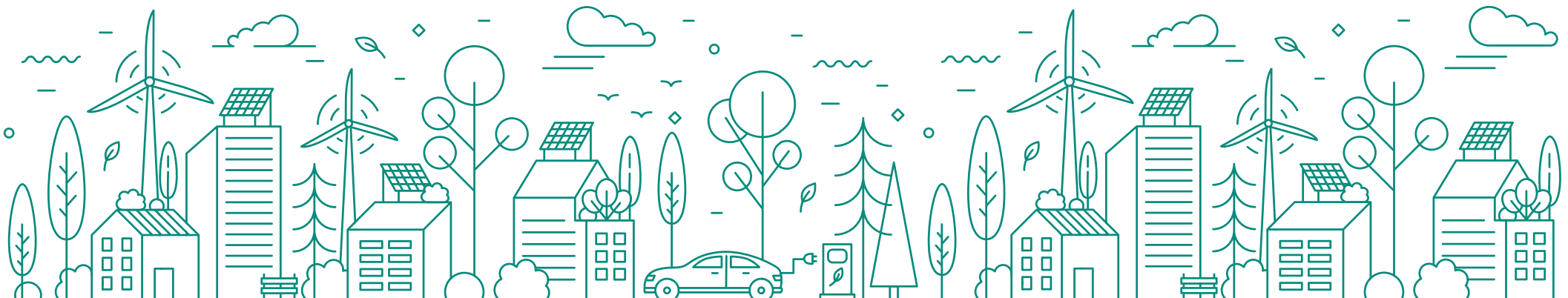
# Our Reporting Assurance

As a company it is important for Cleveland Cable Company to ensure that our carbon emissions reporting is as accurate as possible. We work with specialists such as EIC who conduct the analysis and reporting to confirm our Carbon Footprint Verification.

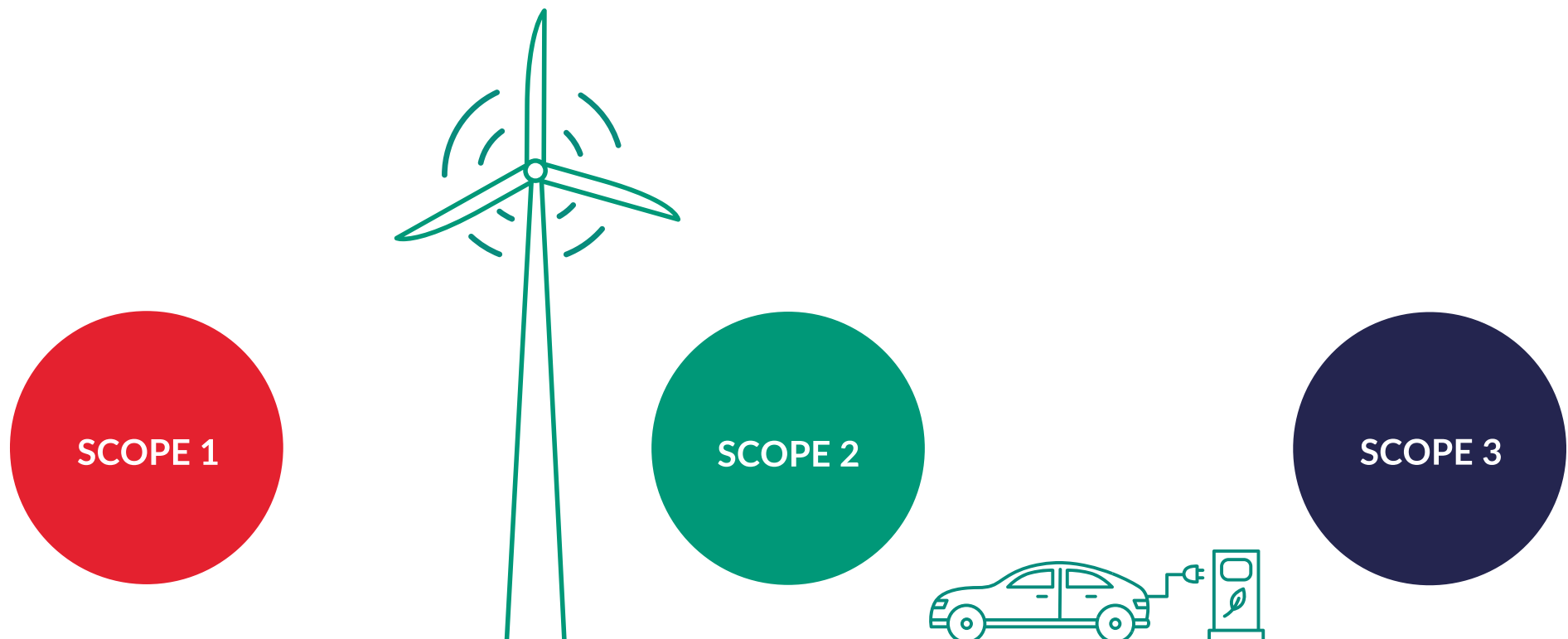
This is done via SECR, ESOS (which we are currently working on ESOS 3) and our ISOs.

We work with both our supply chain and our customers to use the best practices available.

We are committed to working with our suppliers and customers using targets based on science to reduce our Scope 1 and Scope 2 by 42% over a 10-year period, using 2021 as our baseline.



# Our Reporting Assurance



## SCOPE 1

## SCOPE 2

## SCOPE 3

**Scope 1** is very challenging due to our large fleet but we as a company are looking at the next innovation for logistics such as biofuel and HVO. We continue to look at ways to reduce this figure without compromising our service.

**Scope 2** we have been successful in reducing our emissions on the previous year due to our use of renewable energy, such as solar.

**Scope 3** which is 49% of our total emissions for 2023 has reduced on the previous year by 4.5% even though we have received more deliveries and our stocks have increased.

# Scope 1 & 2 Reports

Cleveland Cable Company shows seasonal variation in natural gas emissions, peaking in winter and dipping in summer. Overall, natural gas usage dropped by 27% from last year.

The intensity ratio, calculated as total emissions divided by thousands of cut counts, rose by 4% to 7.2 tCO<sub>2</sub>e/thousand cut counts, up from 6.89 tCO<sub>2</sub>e/thousand cut counts the previous year.



**SCOPE 1**

**SCOPE 2**

Despite the decline in natural gas emissions, Scope 1 emissions, which include natural gas, direct transport, and LPG, rose by 13% to 4,095 tCO<sub>2</sub>e compared to the previous year. This increase is mainly due to a 16% rise in transport emissions.

Scope 2 emissions (electricity) decreased slightly by 2%, totalling 310 tCO<sub>2</sub>e, despite higher overall electricity consumption, thanks to new solar capacity.

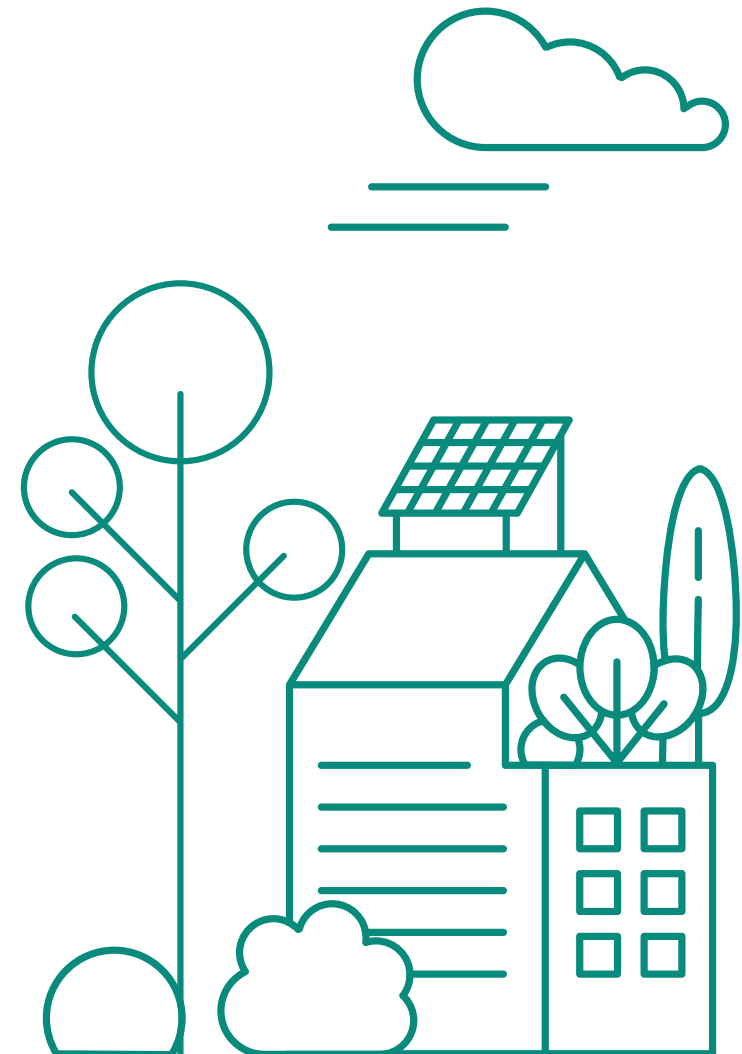
# Carbon Performance

	kWh Energy Consumed YTD				tCO <sub>2</sub> e Emitted YTD			
	Electricity	Natural Gas	Transport	Total	Scope 1	Scope 2 (LB)	Scope 3	Scope 1&2
2023-2024	17,48,634	5,71,468	1,58,05,063	1,91,15,123	4,095	310	-	4,405
2022-2023	16,29,838	7,80,419	1,36,75,367	1,68,85,596	3,612	315	-	3,927

# Intensity Ratio Performance

	Total tCO <sub>2</sub> e	Intensity Metric	Intensity Ratio
2023-2024	4,405.41	615.64	7.16
2022-2023	3,926.74	569.79	6.89

Intensity ratio used: tCO<sub>2</sub>e/cut counts in thousands



# Scope 3

As part of Scope 3 we look at how many containers each depot receives and from where.

Total		Total Containers Per Branch		Total Trailers Per Branch	
Container	3050	Middlesbrough	1363	Middlesbrough	318
Trailer	439	Glasgow	211	Glasgow	17
		Warrington	121	Warrington	3
		Milton Keynes	303	Milton Keynes	7
		London	534	London	60
		Bristol	193	Bristol	25
		Ireland (Dublin)	325	Ireland (Dublin)	9

By Sea:  
Total of 2,725 containers to the UK = total emission 3173.41 tCO<sub>2</sub>.  
Total of 325 containers to Dublin = total emission of 395.06 tCO<sub>2</sub>.

By Road:  
Total of 439 trailers to the UK and Ireland = total emission 382.02 tCO<sub>2</sub>.  
Using 10 of our suppliers for their Scope 1 and 2 total 2550768 tCO<sub>2</sub>.



# Waste

Cleveland Cable Company also has aims of zero waste to landfill and increased use of sustainable and recycled materials. As we are not a manufacturer, we do not carry out any processes which result in waste other than those resulting from normal domestic/office routines. All waste is disposed of in accordance with environmental legislations which are audited throughout the year as per our audit schedule to ensure that we as a company are compliant.

## Office/Warehouse Waste

(i.e. paper, packaging, etc.)

We have a permanent enclosed waste skip on site for general waste which is emptied weekly - 99% of this waste is recycled using an RDF and used for fuel block. This reduces our waste to landfill as per our environmental objectives. This is currently on contract with Veolia. Our paper is collected by Paper Restore fortnightly and recycled. Plastic and cardboard are baled and collected by Cumbria Waste on a weekly basis.

## Wooden Drums & Battens

Cable drums and wooden battens are a perfect example of reusable materials. We offer a free of charge collection service of empty cable drums. All returns are reused in future orders and deliveries. Once the drum has reached its maximum shelf life it is broken down and taken for recycling. Cleveland Cable Company hold a waste transfer licence to transport the wood to UK Wood Recycling (UKWR), who operate a wood recycling facility based next to the pioneering Wilton 10 Biomass Power Station - the UK's first purpose-built wood-burning power station. UKWR reduce the amount of wood being sent to landfill by recycling recovered wood to produce a range of products including horse, poultry and cattle bedding, equestrian surfaces and wood chip to fuel Wilton 10.

## Scrap Cable

All scrap cable is sold to local non-ferrous metal merchant and registered dealers who again recycle the cables in question.

As per our KPI 6, in the past 12 months, Cleveland Cable Company recycled or diverted from landfill 100% of scrap cable in 2023.



# Sustainable Employment

As a multinational company, Cleveland Cable Company prides itself on our competent workforce employed from local areas. As our company constantly improves and grows within our industries, we have increased our workforce in all departments to service this demand. These are local people, many of which were unemployed solely due to the current economic climate and we have been able to offer them not just a job but a long-term career with training and development opportunities. We continue to advertise any future positions geographically and provide employment to the communities we work within.

There are nine branches around the world and we employ a total of 658 personnel, which has been maintained over the last 12 months.

We have moved our Milton Keynes branch to Northampton for efficiency of deliveries to the Midlands and surrounding areas in the UK.

**2023 staff retention rate: 82%**

We use local contractors for any maintenance works or building improvement.

9 GLOBAL LOCATIONS



# Our Supply Chain



## Sustainable Purchasing

The company fully recognises and understands its obligations to carry out its business affairs in an ethical manner and has appointed the Managing Director as being the person within the organisation who has the overall responsibility for all matters relating to the ethics of the company. Individual departmental managers are responsible for ensuring that the company ethics policy is upheld on a day-to-day basis across all areas of business, which includes the responsible and ethical sourcing of goods.

The Purchasing Manager ensures that all cable materials and associated items are compliant to the highest ethical standards. The evaluation and approval of suppliers and sub-contractors is the responsibility of the Purchasing Manager/Senior Buyer and the Group QSHE Manager. Our products conform across a wide range of ethical issues covering compliance, recycling, carbon footprint, embodied carbon, our annual objectives and community benefits.

## Diverse & Inclusive Supply Chains

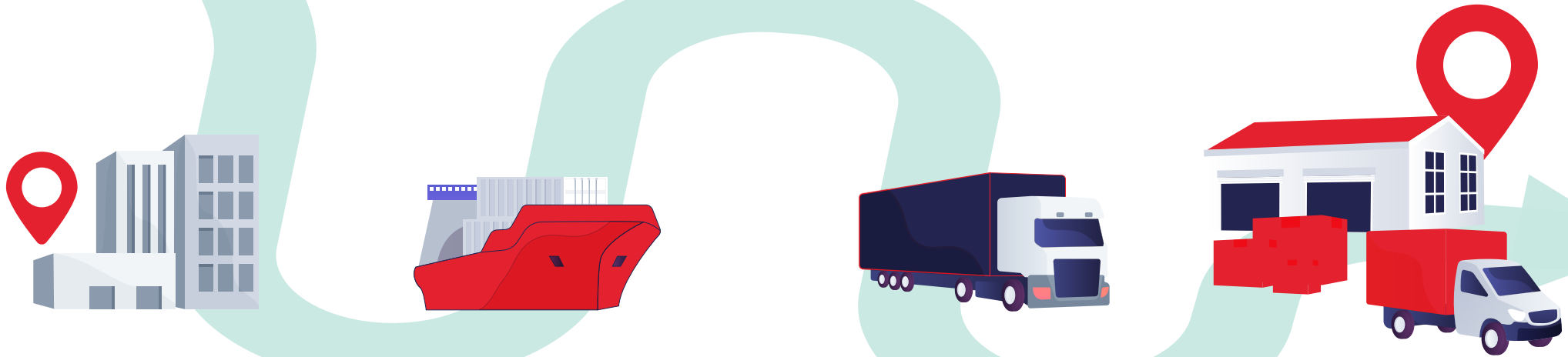
Cleveland Cable Company has a diverse and inclusive supply chain ensuring that diverse suppliers are included in the early tendering stage.

We negotiate with diverse suppliers and constantly develop our supplier management integration processes and metrics to ensure successful and sustainable inclusion. Where possible, we deal with local suppliers and service providers.

## Ethical & Labour Standards

Cleveland Cable Company promotes and sustains good labour and standards within our own company and throughout our supply chain. We have established and continue to maintain our credibility as a purchaser of fair and ethically sourced goods and services.

All suppliers are regularly audited to ensure we are still meeting the requirement of the Ethical Trading Code. Our own workforce respects the rights and equal treatment of all staff regardless of age, gender, skin colour or religion and are aware that unethical treatment will not be tolerated.



## Conflict Minerals

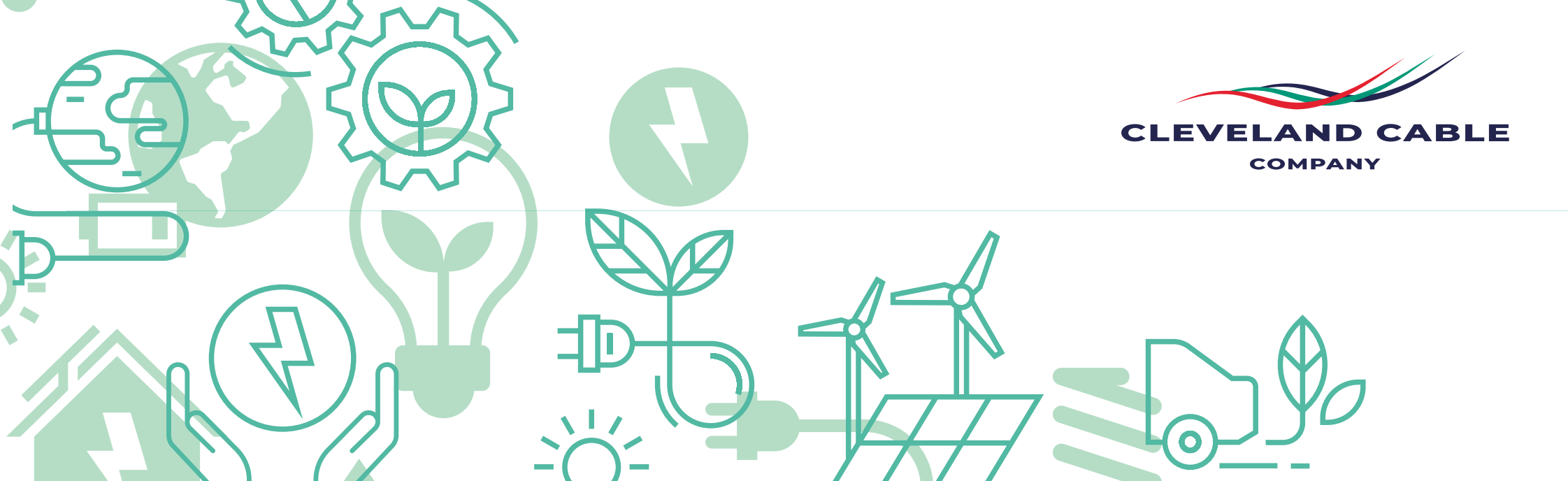
Pursuant to Section 1502 of the Dodd-Frank Act, companies listed on stock exchanges in the USA are obligated to disclose their use of so-called conflict minerals.

This relates to tantalum, tin, tungsten and the ores from which they originate, as well as gold from the Democratic Republic of the Congo and its neighbouring countries (Angola, Burundi, Central African Republic, Republic of the Congo, Rwanda, South Sudan, Tanzania, Uganda and Zambia) – the so-called DRC region.

## Challenges to our Suppliers

National, European and International Cable standards states the use of 'Virgin Materials'. This means that there is no option to use recycled Copper or Aluminium or any insulation or sheathing polymers within the manufacturing of the cable to ensure that the product is compliant.

There is a challenge for all logistics which is one of the largest sources of emissions within Scope 1, 2 and 3 to look at development and commercial availability of electric vehicles which are suitable for further distances than are currently around.



## Our Policies and Governance

We are always looking at best practice, guidance and support from advisors. This includes all polices linked to our Integral Management Systems (ISO 9001, 14001 and 45001).

All our policies are available on our website or upon request. Below are policies linked to our sustainability approach:

- **Quality Policy**
- **Environmental Policy**
- **Occupational Health & Safety Policy**
- **Ethical Policy**
- **Modern Slavery Policy**
- **Equal Opportunities Policy**
- **Anti-Bribery Policy**

All policies are regularly reviewed by our Managing Director to ensure our continuous compliance and improvements as a company.



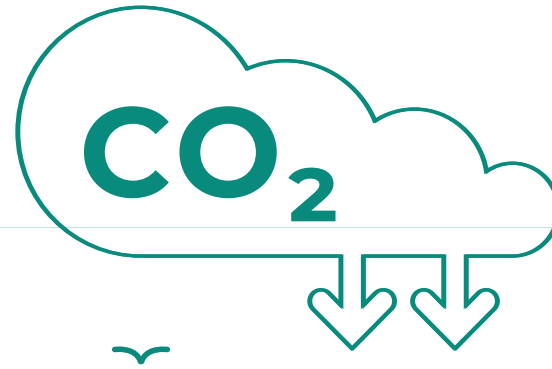
## Working with the Customer

We work with our customers to support them in their own sustainability and ESG goals alongside ours.

We have worked to provide information on embodied carbon emissions on our products, tracing them back to the raw material. We can provide documentation to support this such as TM65s and we are working with our suppliers on Environmental Product Declarations (EPDs) and Product Environmental Profiles (PEPs).

We also share our knowledge as part of our commitment to improved knowledge within the marketplace. We can provide cable training, including an introduction to cables, and Construction Products Regulations. To request this please contact your account manager.





## Next Steps

Cleveland Cable Company aim to be fully compliant with the UK government goals of achieving net zero by 2050. We have spent the last two years receiving specialist consultation on the matter and though we have just started on our sustainability journey, we believe this is achievable in advance of the target date of 31st December 2049.

We already recycle over 98% of waste products ensuring that we reduce any waste to landfill. We have made major investments across all sites to reduce carbon and carbon equivalent usage in order to be carbon neutral across our warehouse facilities.

In the last 12 months we have installed solar panels at our London branch, which is our second largest, and our next installation will be at our Superlec branch with our new Northampton branch next to go through the process for installation of solar.

We are looking at our fleet where we have increased our electric cars and vans, as well as looking at different options for fuel such as biofuel.

We are looking at accreditation for our lab to ISO 17025 which has moved into a new building.

## Summary

As a company we are looking at all aspects of our daily working to ensure that we are a sustainable company for the future of our employees, suppliers and our customers, looking at our emissions and how we can reduce them to ensure the future of our planet.

For further information please contact:

Jason Hodgkinson  
Group QHSE Manager  
Cleveland Cable Company Ltd  
Riverside Park Road  
Middlesbrough  
TS2 1QW

Jhodgkinson@clevelandcable.com

